

# Plumbing Advisory Note\*

## New South Australian residential water heater requirements

Commencing 9 January 2014

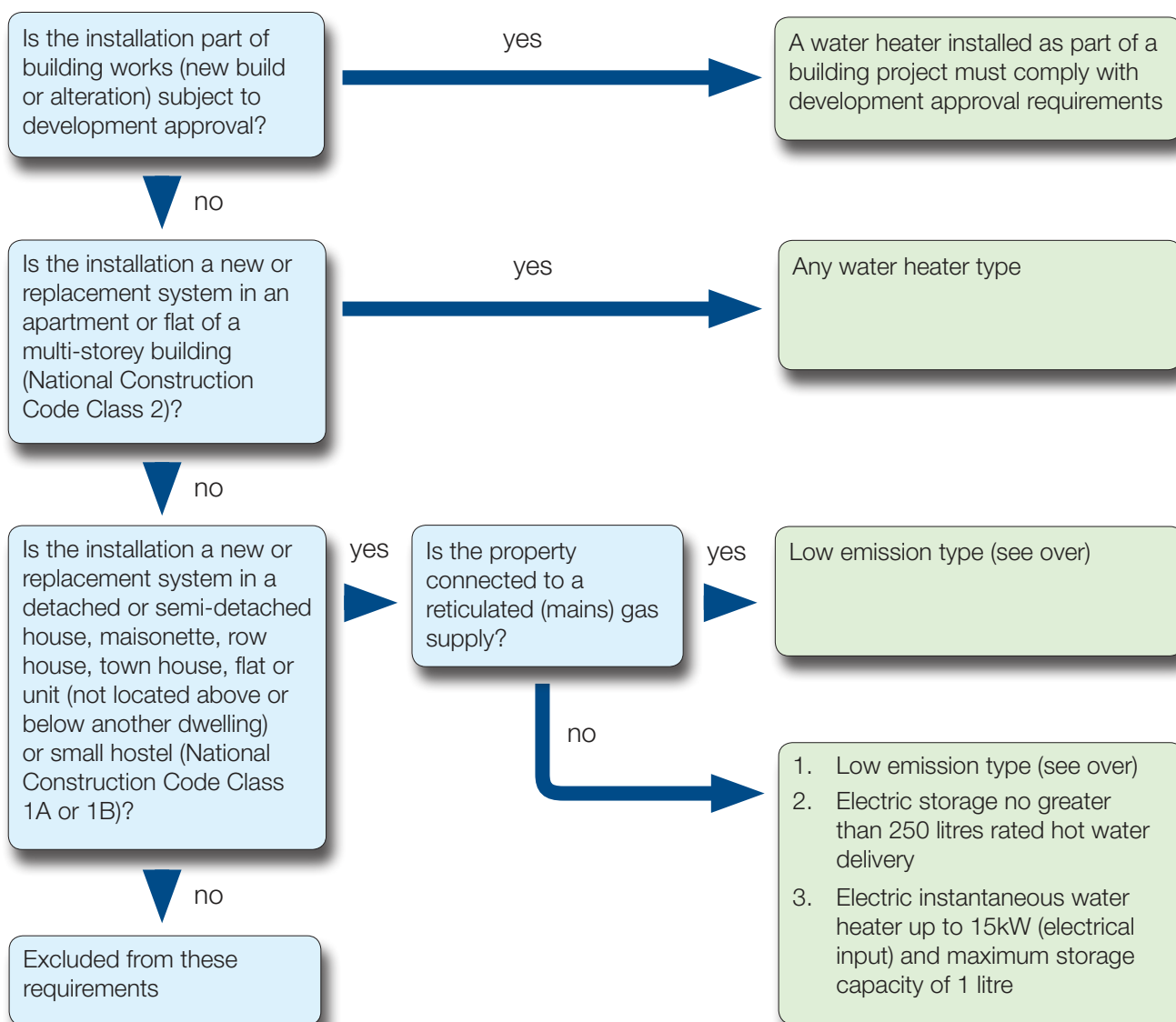
The aim of this advisory note is to help you understand the types of water heaters you can install in homes. This guide supersedes the August 2009 'Plumbers' Guide – Installing Domestic Water Heaters'.

Rules relating to domestic water heater installations have been in place in South Australia since July 2008. The new, simpler, rules described below will continue to help lower household energy use and greenhouse gas emissions. The rules apply state wide. There is no difference between metropolitan and regional areas.

### Types of water heaters that can be installed

#### Type of installation

#### Type of water heater



Web: [sa.gov.au/otrplumbing](http://sa.gov.au/otrplumbing)

Phone: 1300 883 019

Email: [otr.plumbregulator@sa.gov.au](mailto:otr.plumbregulator@sa.gov.au)



Government of  
South Australia

## Low emission water heaters

When you are required to install a low emission water heater you can install one of the following types:

Type of water heater	Requirements												
Solar - electric boosted  Electric heat pump	You can install a water heater that meets either of these zone requirements anywhere in the state. STCs (Small-scale Technology Certificates) are based on Clean Energy Regulator zones. More information can be found online at <a href="http://cleanenergyregulator.gov.au">cleanenergyregulator.gov.au</a> <table border="1"><thead><tr><th>Rated hot water delivery</th><th>Zone 3</th><th>Zone 4</th></tr></thead><tbody><tr><td>220 litres or less</td><td>17 STCs or more</td><td>16 STCs or more</td></tr><tr><td>220 litres and less than 400 litres</td><td>27 STCs or more</td><td>26 STCs or more</td></tr><tr><td>400 litres or more and less than 700 litres</td><td>38 STCs or more</td><td>36 STCs or more</td></tr></tbody></table>	Rated hot water delivery	Zone 3	Zone 4	220 litres or less	17 STCs or more	16 STCs or more	220 litres and less than 400 litres	27 STCs or more	26 STCs or more	400 litres or more and less than 700 litres	38 STCs or more	36 STCs or more
Rated hot water delivery	Zone 3	Zone 4											
220 litres or less	17 STCs or more	16 STCs or more											
220 litres and less than 400 litres	27 STCs or more	26 STCs or more											
400 litres or more and less than 700 litres	38 STCs or more	36 STCs or more											
Gas instantaneous or storage - bottled or mains	Must have an energy rating of 5 stars or more or A gas water heater installed entirely within a fully enclosed roof space, room or attached garage of an established home must have an energy rating of 3 stars or more. This option is not available for water heaters installed as part of building work that requires development approval.												
Solar - gas boosted	Eligible for 1 or more STC.												
Solar - wood boosted	Any water heater can be installed.												
Wood combustion	Any water heater can be installed.												

## Water efficiency (flow rate) requirements

Each time you install a water heater (except where the installation is excluded – see below) you must ensure all shower outlets connected to it have a flow rate of not greater than 9 litres per minute.

This can be achieved by using a WELS 3 star shower head, a WELS 3 star flow restrictor or a gravity fed (vented) water heater.

## Installations excluded from the water heater requirements

A water heater installation does not need to comply with the residential water heater requirements if it:

- serves a non-residential premise - eg commercial premise, shop, school, office building
- serves only a shed, garage or swimming pool
- is a secondary electric storage water heater up to 55 litres that doesn't serve a shower or bath
- is shared between multiple units, flats or apartments in a multi-storey apartment building
- is an electric storage water heater up to 55 litres providing temporary water heating for up to 60 days, pending the installation of a complying water heater
- is an electric or gas gravity fed water heater up to 250 litres rated hot water delivery located in a roof space
- is replacing a single faulty component in an existing solar or heat pump water heater
- is a repair to an existing water heater or is a replacement water heater under warranty

Specific exemptions may be granted by the Technical Regulator, on a case by case basis, where extraordinary technical difficulties can be demonstrated.

## Further help and advice for plumbers

This Plumbing Advisory Note provides an overview of the new South Australian residential water heater requirements. For further information and the full South Australian Water Heater Requirements visit [sa.gov.au/otrplumbing](http://sa.gov.au/otrplumbing) or call the Plumbers' Water Heater Information Line on 1300 883 019.

Web: [sa.gov.au/otrplumbing](http://sa.gov.au/otrplumbing)  
Phone: 1300 883 019  
Email: [otr.plumbregulator@sa.gov.au](mailto:otr.plumbregulator@sa.gov.au)



Government of  
South Australia